



PAKISTAN NOTICES TO MARINERS

WEEKLY EDITION 15

Notice: 69 – 72(T)/24

13 APR 2024

Copies of these Notices can be obtained gratis from Mercantile Marine Department and PN Chart Depot / NAVAREA IX Headquarters, 11 Liaquat Barracks Karachi. The same can be downloaded from web: hydrography.paknavy.gov.pk.

CONTENTS

- I NOTICES TO MARINERS**
- II REPRINTS OF RADIO NAVIGATIONAL WARNINGS**
- III CORRECTIONS TO SAILING DIRECTIONS**
- IV MARINE INFORMATION**

Mariners are requested to inform the National Hydrographic Office, Naval Headquarters, 11 Liaquat Barracks, Karachi, Pakistan, immediately on the discovery of new dangers, or suspected dangers to navigation and of changes or defects in aids to navigation noticed in NAVAREA IX and of shortcomings in PAK charts or publications.

Tel : + 92-21-48506151
+ 92-21-48506152
Fax : + 92-21-99201623
+ 92-21-35867737

E-mail : hydropk@paknavy.gov.pk
hydrpk@gmail.com

Web : hydrography.paknavy.gov.pk.

MUHAMMAD WASIM
Captain Pakistan Navy
Dy HoP

National Hydrographic Office, Naval Headquarters, 11 Liaquat Barracks, Karachi 75530, PAKISTAN

PART – I
NOTICES TO MARINERS

69/24 INDIAN OCEAN - Submarine cables.

Chart PAK 57 [*previous update 15/24*] WGS84 DATUM

Insert	submarine cable,  , joining:	18° 42'·7N., 71° 59'·5E. 18° 41'·7N., 71° 57'·8E. 17° 44'·0N., 70° 56'·6E.
--------	---	--

BA Chart 707 [*previous update 1056/24*] WGS84 DATUM

Insert	submarine cable,  , joining:	18° 42'·7N., 71° 59'·5E. 18° 41'·7N., 71° 57'·8E. 17° 44'·0N., 70° 56'·6E.
--------	---	--

Source: Admiralty Notice to Mariners No. 1625/2024

70/24 OMAN - Depths.

BA Chart 3518 (Panel A, Muscat (Masqaṭ) to Mina Al Fahḩ) [*previous update 571/24*] WGS84 DATUM

Insert	sounding out of position, <i>15</i> , and extend 20m contour NE to enclose depth, <i>14</i> ₅	23° 39'·12N., 58° 31'·69E. (a) 23° 39'·36N., 58° 30'·55E.
Delete	depth, <i>17</i> ₄ , close NW of:	(a) above

BA Chart 3522 [*previous update 571/24*] WGS84 DATUM

Insert	sounding out of position, <i>15</i> , and extend 20m contour NE to enclose depth, <i>14</i> ₅	23° 39'·12N., 58° 31'·69E. (a) 23° 39'·36N., 58° 30'·55E.
Delete	depth, <i>18</i> , close E of:	(a) above

Source: Admiralty Notice to Mariners No. 1580/2024

71/24 BAHRAIN - NM Block. Buoy. Light-beacon.

BA Chart 3738 (INT 7254) [*previous update 244/24*] WGS84 DATUM

Amend	Ra's Hayyan light-buoy to, <i>LFL.10s</i>	26° 03'·26N., 50° 39'·05E.
-------	---	----------------------------

BA Chart 3790 (INT 7252) [*previous update 244/24*] WGS84 DATUM

Insert	the accompanying block, centred on:	26° 07'·6N., 50° 38'·7E.
Replace	 Fl.3s7M with  <i>LFL.10s</i>	26° 03'·23N., 50° 39'·10E.

Source: Admiralty Notice to Mariners No. 1593/2024

72(T)/24 RED SEA - Wreck.

1. A partially submerged wreck is in position 13° 21'·19N., 42° 57'·50E.
2. The wreck is still buoyant and may drift from this position or sink further beneath the surface.
3. Mariners are advised to navigate with caution in the area.
(WGS84 DATUM)

BA Charts affected - 6 - 143 (INT 7005) - 157 (INT 7006) - 265 (INT 7114) - 452 (INT 7117) - 453 (INT 7116) - 1925 - 2964 (INT 758) - 4704 (INT 704)

Source: Admiralty Notice to Mariners No. 1578(T)/2024

PART – II
RADIO NAVIGATIONAL WARNINGS

138/24. SOUTHERN GULF. UAE. Charts BA 2888, 3174 and 3404. Following aids to navigation established at RAK maritime city:

Sector Light	25-56.61N, 056-03.59E	Occ RWG 4s 31m 3M	Centre Bearing 351 Degree (Inbound)
Sector Light	25-57.52N, 056-03.46E	Occ RWG 4s 31m 3M	Centre Bearing 173 Degree (Outbound)

Night navigation at RAK Maritime City will commence on 08 Apr 24.

- 139/24. PERSIAN GULF.** IRAN. Charts BA 2837 and 2888. Starboard beacon with topmark FI(1) 5sec 3M 6 meters established in position 26-58.42N 055-44.99E. Mariners cautioned.
- 140/24. IRAN.** Bandar e Jask. Charts BA 2888 and 2851. Lattice beacon 25-38.19N 057-45.86E temporarily removed. Mariners cautioned.
- 141/24. ARABIAN GULF.** Saudi Arabia (Port Al Jubail). Charts BA 3718 and 3719. Buoy No 7 in position 27-02.07N 049-41.60E unlit. Mariners cautioned.
- 142/24. CENTRAL GULF.** Qatar. Charts BA 2523, 2886 and 3950. Rig “Java Star 3” will be moved on 11 Apr 24 by vessels “Britoil 61”, “SL Jaguar” & “Atlantic Vortex” from position 26-01.00N, 052-11.02E to 25-54.64N, 051-48.37E. Mariners cautioned. Cancel this message on 141200 UTC Apr 24.
- 143/24.** Cancel Navarea IX warning 101/24 and this msg. Published in admiralty notices to mariners 1578(T)/24.
- 144/24. SELF CANCELLING.** Navigational warnings inforce:
- 2021 series: 109, 224, 397, 399, 445, 448, 490 and 491.
- 2022 series: 027, 039, 067, 095, 102, 112, 185, 198, 220, 227, 294, 295, 311, 328, 331, 358, 443, 477, 480, 483, 489, 497, 501, 505, 506, 507 and 513.
- 2023 series: 025, 028, 034, 058, 067, 068, 070, 071, 094, 096, 110, 111, 116, 120, 124, 131, 135, 159, 177, 190, 201, 221, 226, 237, 245, 263, 266, 284, 293, 299, 307, 314, 315, 318, 326, 338, 340, 341, 346, 355, 359, 371, 376, 378, 398, 404, 410, 412, 415, 420, 435, 437, 439, 447, 448, 453, 455, 460, 462, 464, 467, 468, 473 and 475.
- 2024 series: 004, 007, 010, 011, 012, 029, 035, 037, 042, 045, 047, 048, 057, 067, 076, 087, 094, 097, 103, 110, 113, 115, 123, 125, 128, 130, 132, 138, 139, 140, 141 and 142.

COASTAL WARNING

- 049/24 SELF CANCELLING.** Navigational Warnings Inforce:
- 2022 series: 024, 027, 060, 063, 081 and 082.
- 2023 series: 027, 073 and 126.
- 2024 series: 041 and 045.

WPGs Inforced 2024: 18
WPGs Cancelled 2024: Nil

PART – III

CORRECTIONS TO SAILING DIRECTIONS

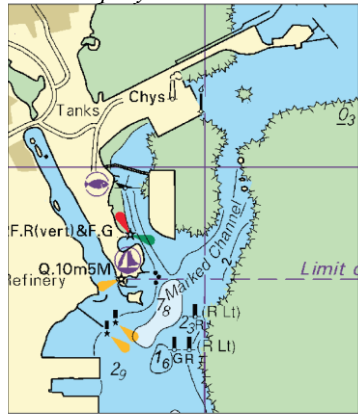
Nil

PART – IV

MARINE INFORMATION

Nil

To accompany Pakistan Notice to Mariners 71/24.



Block for BA Chart No 3790

NP77, Vol D Edition 2023. Weekly Edition No. 15, Dated 11 April 2024.
 Last Updates: Weekly Edition No. 14, dated 04 April 2024.

WEST COAST. ILHAS BERLENGAS. ILHÉU FARILHÃO GRANDE						
D2084 PT. I. 132	- Farilhão	39 28-73 N 9 32-70 W	FI(2)W 5s	99	13 White column, red stripes 6	<i>fl 0-5, ec 1, fl 0-5, ec 3.</i> TE 2024 *
D2713 PT. I. 881	- Porto da Casa. Pier. Head	39 40-31 N 31 06-55 W	FI R 4s	7	3 Red and white striped column 4	<i>fl 1.</i> TE 2024 *
D2757-2 PT. I. 612	- Porto Santo. N Mole. Head	33 03-58 N 16 18-91 W	FI R 4s	12	7 White column, red bands 4	<i>fl 1.</i> TE 2024 *